

# St. Helena Catholic Church

## St. Jude & St. Elizabeth

---

122 South 1st Street • Amite, Louisiana 70422  
Phone: (985) 748-9057 • Fax: (985) 748-9094



*St. Helena*

Dear Parents,

As always welcome to St. Helena's PSR Program. We are excited about having your children in attendance this year.

### PSR HOME SCHOOLING:

Parents have the option of enrolling in the PSR Home Schooling Program. They teach their child using Seton Press Religion of Young Catholics books and materials. To apply for this option, circle Home Schooling on the registration form where it request the session. All Home School packets will be available for pick up at the Church Office on July 1, 2021. Home School packets MUST be returned by August 16, 2021.

### PSR ATTENDANCE:

Students will be allowed one (1) absence for the PSR Program. If a student is absent for more than 1 day, the student must complete our PSR Homeschool Program. If the student chooses to continue attending the PSR Program after missing one day, the Homeschool Packet is still MANDATORY. If they do not sign up for the PSR Homeschool Program or complete the PSR Program, the student will have to repeat the grade at our next PSR Summer Classes. The student may choose to attend PSR at another Church in our Parish, if needed. We will have to have signed documentation from a priest stating they have completed the program.

Thank you for your attention to this matter and for allowing us to educate your child in the teachings and traditions of Holy Mother Church.

Sincerely,

Rev. Mark B. Beard  
St. Helena Catholic Church  
Amite, Louisiana



*St. Jude*



*St. Elizabeth*

## **CARPOOL:**

All parents are given a carpool tag to place on their vehicle rearview mirror for carpool at PSR. The car tag is given out when you drop off your child on the 1st day of PSR. This allows us to call the last name of the student during carpool.

## **MORNING DROP OFF:**

Drop Off begins at 7:30am. At 8:00am, the children will enter the classrooms to begin the PSR day. If you don't have a car tag, you will have to park in the lot by Classroom 101. We will have a table set up so that you can arrange for another car tag. This procedure is to ensure the safety of all children.

## **12:30 PICK UP:**

Pick up will begin at 12:30. If your child needs to leave before 12:30pm, a parent with a car tag will park outside the gate and will be allowed at the West Pedestrian Gate to sign out child early. Please make sure all names with permission to check out your child are listed on the registration form. Again, this procedure is to ensure the safety of all children.

## **LUNCH:**

Lunch is provided daily at noon.

## **SNACK:**

A snack is provided daily for students in the morning. For example, a snack could consist of snowballs, popcorn, ice cream, etc. Classes rotate during Snack Times.

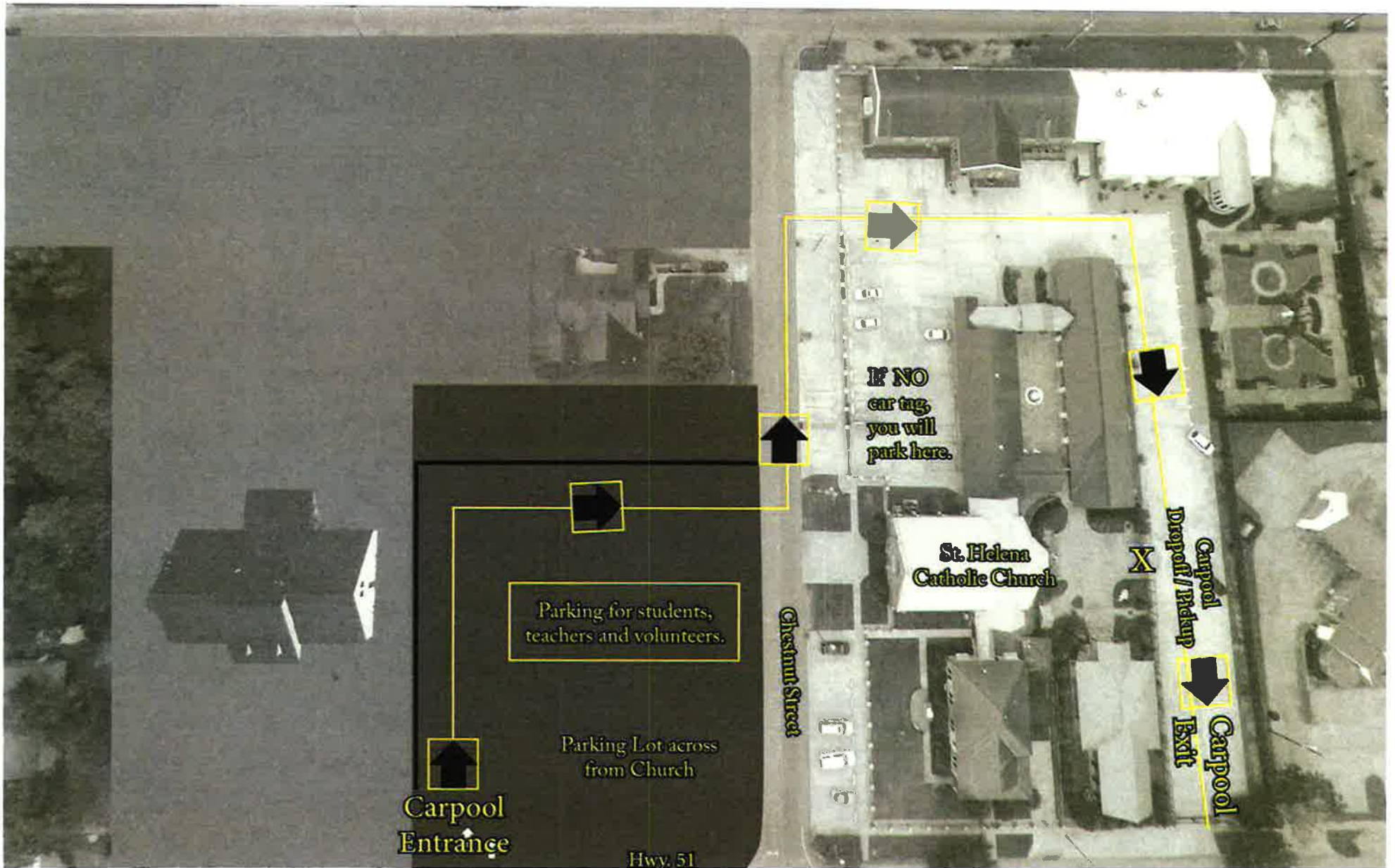
## **HOME SCHOOLING:**

Parents have the option of enrolling in the PSR Home School Program. They teach their child using Seton Press Religion for Young Catholics books and materials. To apply for this option, circle Home School on the registration form. All Home School Packets will be available for pick up at the Church Office on July 1, 2021. Home School Packets MUST be returned by August 16, 2021.

## **PSR ATTENDANCE:**

Students will be allowed one (1) absence for the PSR Program. If a student is absent for more than 1 day, the student must complete our PSR Homeschool Program. If the student chooses to continue attending the PSR Program after missing one day, the Homeschool Packet is still MANDATORY. If they do not sign up for the PSR Homeschool Program or complete the PSR Program, the student will have to repeat the grade at our next PSR Summer Classes. The student may choose to attend PSR at another Church in our Parish, if needed. We will have to have signed documentation from a priest stating they have completed the program.

## PSR Carpool Route



### Directions for Carpool:

- Parents will enter the parking lot across from Church at the entrance marked on Hwy. 51.
- You will drive through the parking lot, take a left onto Chestnut St. and make a right into the entrance on campus.
- If you DO NOT have a car tag, you will be directed to front parking lot where someone will be stationed in order for you to obtain car tag.
- If you DO have a car tag, you will continue around towards back of Campus. Dropoff children at the Meditation Garden Entrance.
- Afternoon Pickup will enter the same entrance at Hwy. 51. Two lines will form at the entrance on campus. Pickup students at the Meditation Garden Entrance.